



STATE OF THE DISTRICT

**Presentation to the
Board of Education**

November 29, 2023



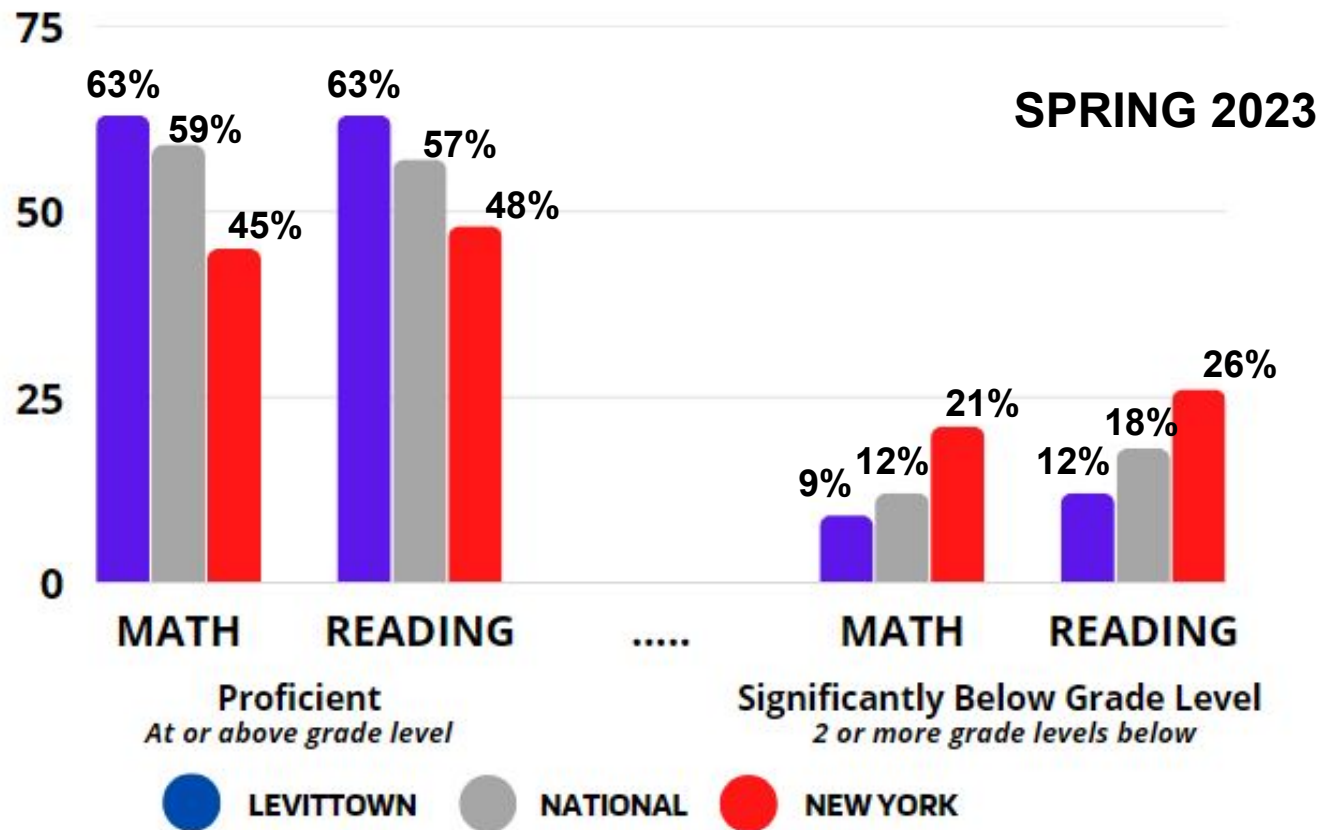
LPS
#Successat





A LOOK AT K-8

I-READY COMPARATIVE DATA





Grade Level	Spring 2022 <i>Above or at Grade Level</i>	Spring 2023 <i>Above or at Grade Level</i>
K	78%	78%
1	65%	61%
2	59%	68%
3	65%	62%
4	66%	70%
5	65%	65%



I-Ready does not suggest using proficiency data for cohort analysis



Grade Level	Spring 2022 <i>Above or at Grade Level</i>	Spring 2023 <i>Above or at Grade Level</i>
6	64%	65%
7	50%	54%
8	48%	*39%



I-Ready does not suggest using proficiency data for cohort analysis

**Grade 8 accelerated students do not participate in I-Ready benchmarking.*



#Successat
LPS





Grade Level	Spring 2022 <i>Above or at Grade Level</i>	Spring 2023 <i>Above or at Grade Level</i>
K	84%	87%
1	67%	72%
2	66%	71%
3	75%	73%
4	57%	51%
5	53%	53%



Grade Level	Spring 2022 <i>Above or at Grade-Level</i>	Spring 2023 <i>Above or at Grade Level</i>
6	54%	52%
7	56%	53%
8	65%	62%

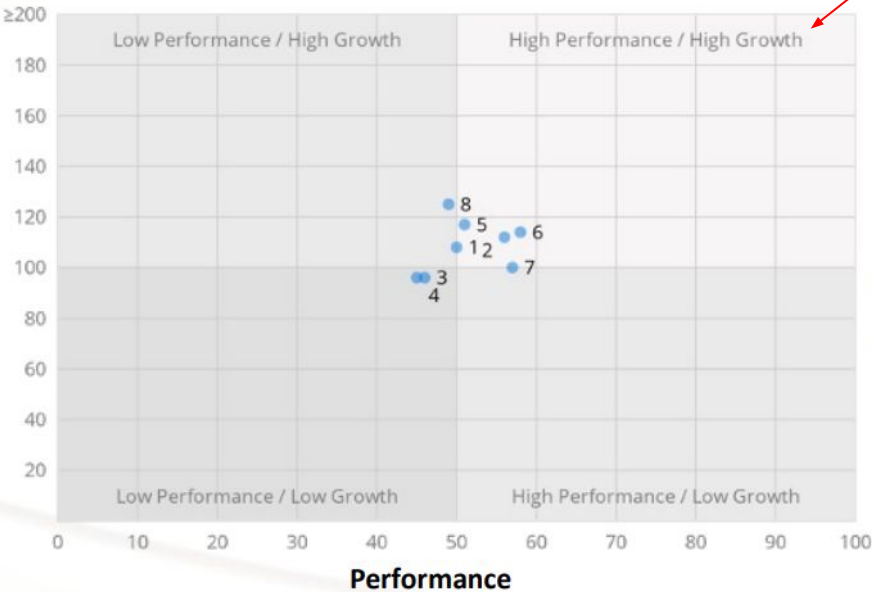


I-Ready does not suggest using proficiency data for cohort analysis

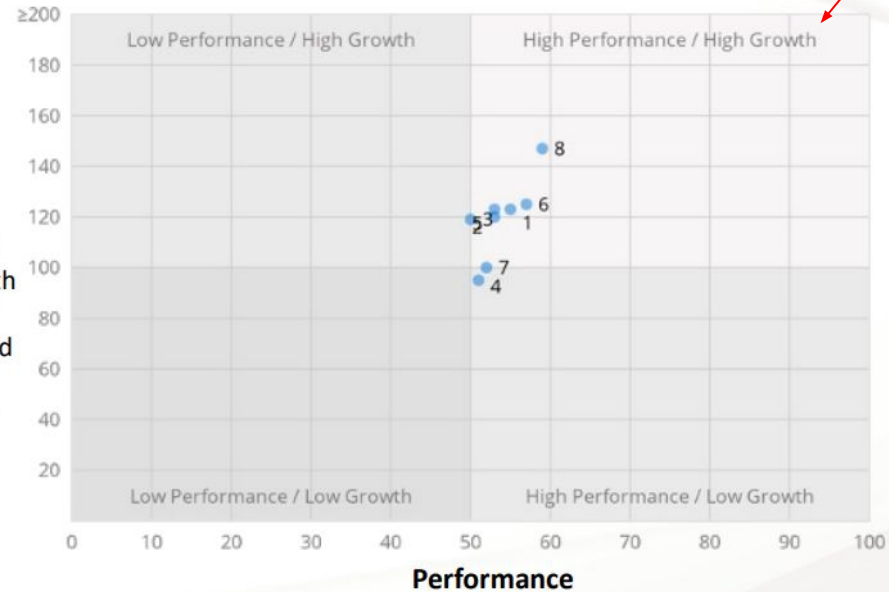
How Did Students Across the District Grow From Fall to Spring 22-23?

Comparison of Median Student Performance and Median Percent of Typical Growth

Mathematics



Reading



Growth
Median percent of typical growth achieved, differentiated by fall placement levels

Median student performance relative to historical 18-19 norms
(50th percentile is the national median)

Median student performance relative to historical 18-19 norms
(50th percentile is the national median)



#Successat
LPS



NYS 3-8 ASSESSMENT RESULTS

MATH & ENGLISH LANGUAGE ARTS & SCIENCE

ELA Passing Rates	2022-2023 Levittown	2022-2023 County	Regional Gap	Math Passing Rates	2022-2023 Levittown	2022-2023 County	Regional Gap
Gr 3 ELA	56%	59%	-3	Gr 3 Math	69%	70%	-1
Gr 4 ELA	67%	63%	+4	Gr 4 Math	77%	71%	+6
Gr 5 ELA	47%	60%	-13	Gr 5 Math	70%	68%	+2
Gr 6 ELA	60%	61%	-1	Gr 6 Math	70%	69%	+1
Gr 7 ELA	63%	60%	+3	Gr 7 Math	83%	69%	+14
Gr 8 ELA	61%	66%	-5	Gr 8 Math	64%	51%	+13

Note: Participation rate ~ 35%

Grade 4 Science: Test Eliminated

*****Grade 8 Science: 73% passing percentage***

*Students who take the Algebra 1 Regents in Grade 8 do not take the 8th grade NYS Math Assessment

*****Less than 8% of our 8th graders participated in the Grade 8 Science Assessment***

Computer-Based Testing (CBT)

Grades 5 & 8 ELA, Math, Science

Spring 2024

Required CBT for grades
5 & 8

Optional CBT for all other
Grades

Grades 4 & 6 ELA and Math

Spring 2025

Required CBT for grades
4, 5, 6 and 8

Optional CBT for grades
3 and 7

Grades 3 and 7 ELA and Math

Spring 2026

Required CBT for all
grades 3-8

PSAT - FALL 2023

SAT - SPRING 2024



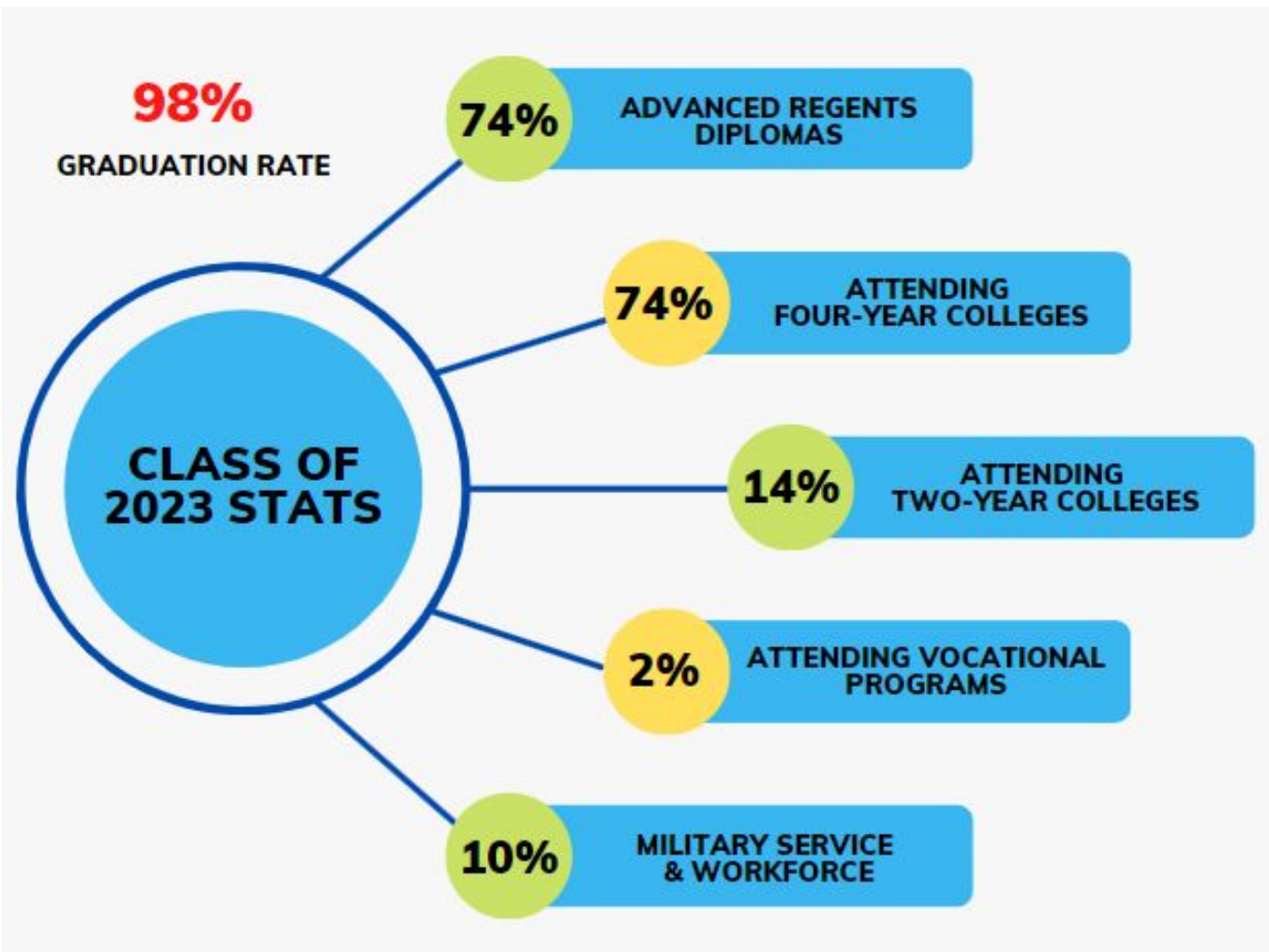
LPS

#Successat





A LOOK AT 9-12



98%

GRADUATION RATE

74%

ADVANCED REGENTS
DIPLOMAS

74%

ATTENDING
FOUR-YEAR COLLEGES

14%

ATTENDING
TWO-YEAR COLLEGES

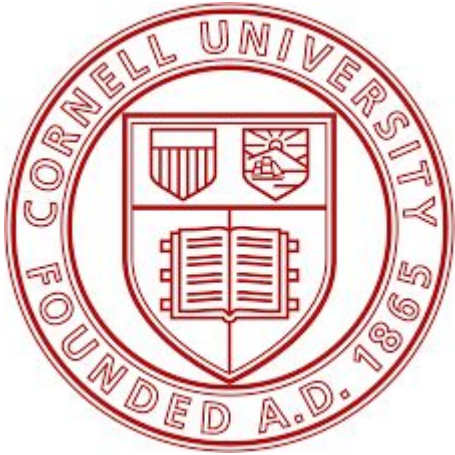
2%

ATTENDING VOCATIONAL
PROGRAMS

10%

MILITARY SERVICE
& WORKFORCE

**CLASS OF
2023 STATS**



***NOVEMBER 29, 2023 - VOCATIONAL FAIR
MACARTHUR HIGH SCHOOL & DIVISION AVENUE HIGH SCHOOL***



LPS
#Successat



NYS REGENTS EXAMINATION RESULTS

Regents Exam	Levittown Passing Percentage	Nassau County Passing Percentage	Regional Gap
English	96	85	+10
Algebra I	93	83	+10
Algebra II	89	84	+5
Geometry	85	71	+14
Global History	94	88	+6
US History	98	91	+7

NYS REGENTS EXAMINATION RESULTS

Regents Exam	Levittown Passing Percentage	Nassau County Passing Percentage	Regional Gap
Living Environment	90	79	+11
Chemistry	85	80	+5
Earth Science	87	82	+5
Physics	85	75	+10



LPS
#Successat



ADVANCED PLACEMENT RESULTS

	MAY 2022	MAY 2023
Number of AP Tests Taken	1,682	1,587
Percentage of Students Earning a 3, 4, or 5	67	69
AP Capstone Diploma Recipients	37	22
AP Scholars	136	143

AP HONOR ROLL RECIPIENTS



MacArthur High School
&
Division Avenue High School



Division Avenue High School



SAT OVERALL SCORE 2022-2023 TEST ADMINISTRATIONS

	<800	800-990	1000-1190	1200-1399	1400-1600
LEVITTOWN	2%	18%	50%	24%	6%
NEW YORK	17%	27%	29%	20%	7%

LEVITTOWN MEAN TOTAL SCORE: 1124

NEW YORK STATE MEAN TOTAL SCORE: 1040



BEYOND ASSESSMENTS
#successatlps



LPS
#Successat



NYSED SEALS



130 graduates earned the Seal of Biliteracy. Students earning this seal demonstrate proficiency in two or more languages.

183 graduates earned the Seal of Civic Readiness. This seal recognizes students who demonstrate civic knowledge & engage in civic experiences.



UNIQUE NEW HIGH SCHOOL COURSES



DEPARTMENT	COURSE TITLE
<i>BUSINESS</i>	College Real Estate
<i>ENGLISH</i>	Branding Yourself for Success
<i>FAMILY & CONSUMER SCIENCE</i>	Future Teachers
<i>SCIENCE</i>	College Anatomy & Physiology College Marine Biology
<i>TECHNOLOGY</i>	Advanced Woodworking



#Successat
LPS



CURRICULUM & PROFESSIONAL LEARNING HIGHLIGHTS



- HMH INTO READING (K-5)
- FOUNDATIONS/GEODES (K-2)
- RESPONSIVE CLASSROOM TRAINING (K-5) *-ADDITIONAL COHORTS*
- LETRS TRAINING (K-5) *-ADDITIONAL COHORTS*
- BREATHE FOR CHANGE - PHYSICAL EDUCATION (K-12)

CURRICULUM & PROFESSIONAL LEARNING HIGHLIGHTS

- SCHOOL CLIMATE COMMITTEE (K-12)
- SPIRE TRAINING - READING INTERVENTIONISTS (K-5)
- TEACHER ASSISTANT TRAINING - NEW ELA PROGRAMS & RESPONSIVE CLASSROOM (K-5)
- DEVELOPMENT OF A RESEARCH SCOPE & SEQUENCE IN ENGLISH (K-12)
- DIGITAL FLUENCY STANDARDS - ELEMENTARY CURRICULUM





#Successat
LPS



OTHER DISTRICT HIGHLIGHTS

- ★ RETURN OF ADULT CONTINUING EDUCATION
- ★ TRANSITION TO PARENT SQUARE
- ★ EXPANSION OF ESPORTS TO SALK
- ★ REVISION OF THE HS COURSE CATALOG & MASTER SCHEDULING PROCESS
- ★ CONTINUED GROWTH OF COHORT WORKING TOWARD NATIONAL BOARD CERTIFICATION



OTHER DISTRICT HIGHLIGHTS

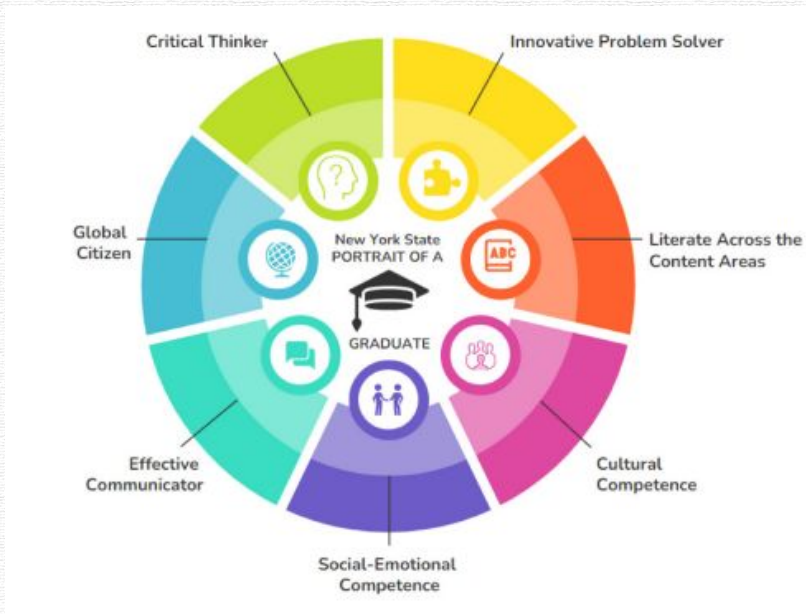
- ★ REVISION OF GRADUATION REQUIREMENTS
- ★ REDESIGN OF INSTRUCTIONAL SPACES -
ELEMENTARY LIBRARIES & HIGH SCHOOL BUSINESS
CLASSROOMS
- ★ ADDITION OF ELEMENTARY INSTRUCTIONAL
COACHES
- ★ REDESIGN OF ELEMENTARY LITERACY CENTER
CLASS





**NEW YORK STATE
BLUE RIBBON COMMISSION
ON GRADUATION MEASURES
THE RECOMMENDATIONS**

BLUE RIBBON COMMISION RECOMMENDATIONS



BLUE RIBBON COMMISION RECOMMENDATIONS

- Replace the three diploma types with one diploma and the option to add seals and endorsements

- Diploma credit requirements that include:
 - civic responsibility (ethics)
 - cultural competence
 - financial literacy
 - fine and performing arts
 - science, technology, engineering, and mathematics
 - writing skills for real-world scenarios



BLUE RIBBON COMMISION RECOMMENDATIONS



- Ensure access to career and technical education (CTE), including internships and work-based learning opportunities
- Move to a model that organizes credit requirements into larger categories (e.g., mathematics and science courses could be included in the “STEM” category)

BLUE RIBBON COMMISION RECOMMENDATIONS



- Modify diploma assessment requirements to allow more assessment options
- Require that professional development plans include culturally responsive-sustaining education practices and pedagogy
- Update for FACS, health, and media literacy education

BOARD OF REGENTS TIMELINE





#Successat
LPS





Questions?